

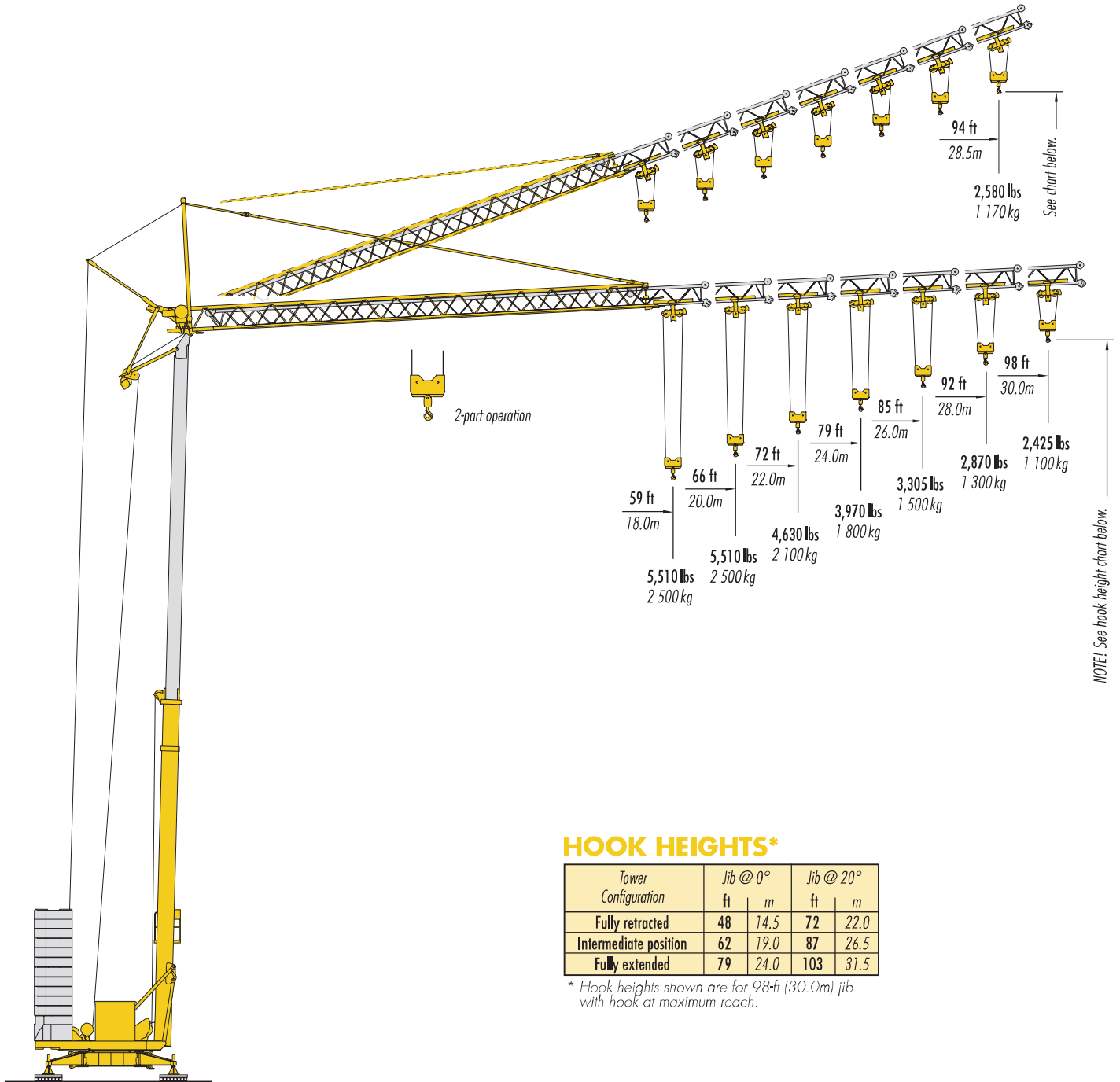
# The 32 TT fast-erecting crane.



**LIEBHERR**

# LIEBHERR 32 TT

## SELF-ERECTING CRANE

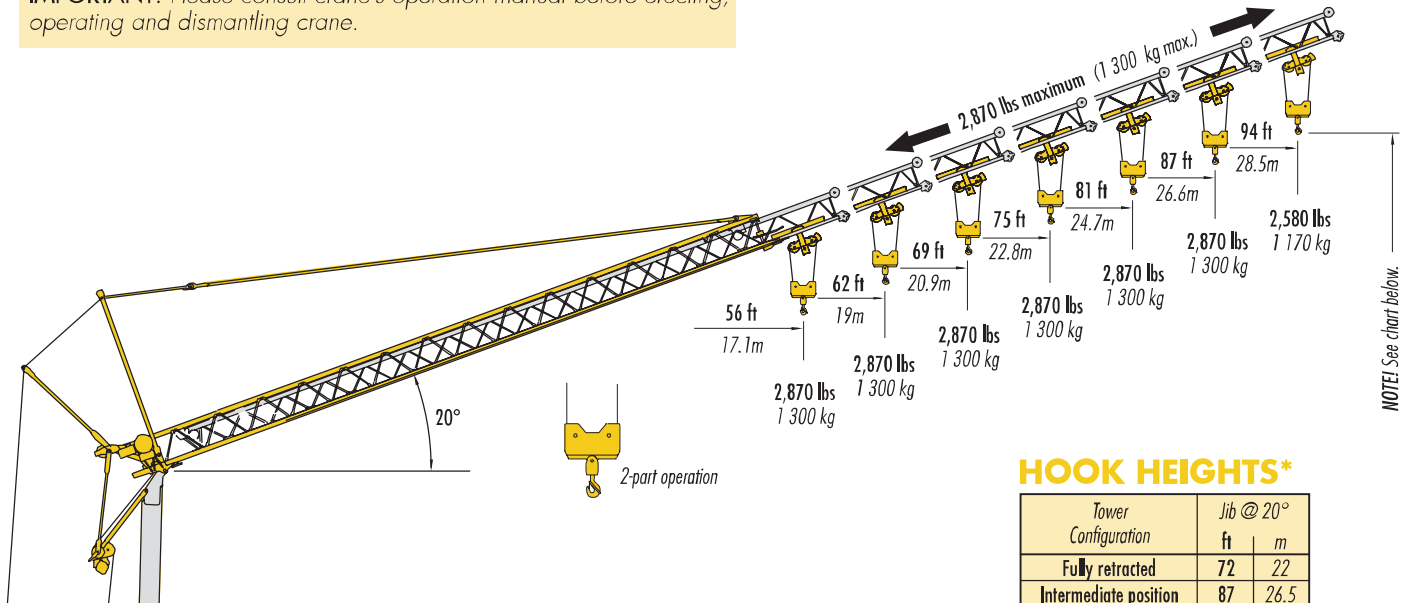


### STATIONARY

on outriggers with spindle jacks  
maximum height under hook  
103 ft (31.5m)

# LIEBHERR 32 TT

**IMPORTANT!** Please consult crane's operation manual before erecting, operating and dismantling crane.



NOTE! See chart below.

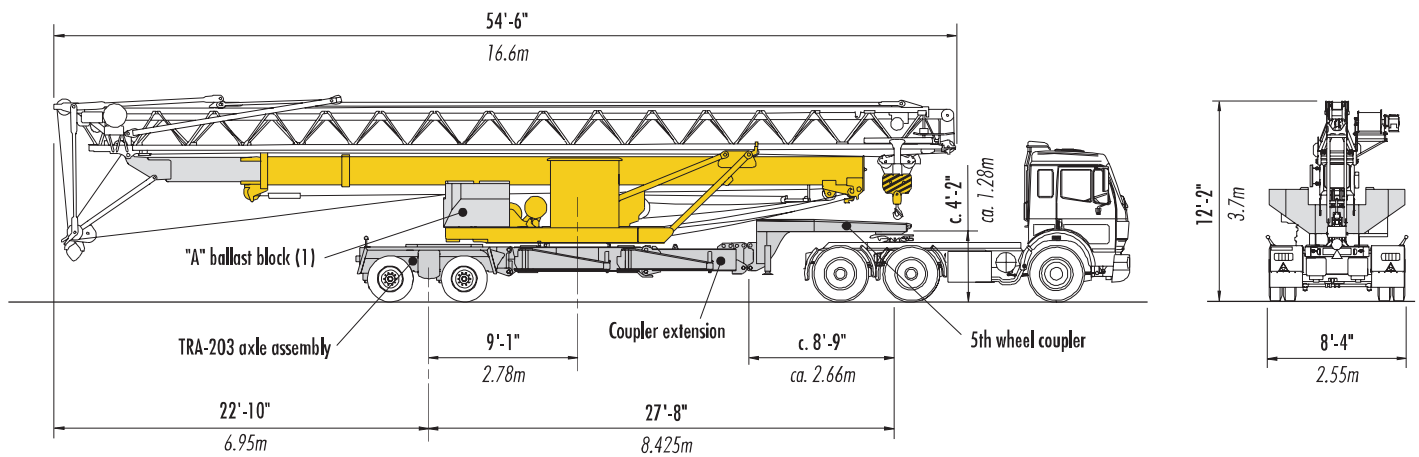
## HOOK HEIGHTS\*

Tower Configuration	Jib @ 20°	
	ft	m
Fully retracted	72	22
Intermediate position	87	26.5
Fully extended	103	31.5

\* Hook heights shown are for 98-ft (30m) jib with hook at maximum reach

## Jib in Luffed Position

in 2-part operation at 20°











## TRANSPORTER

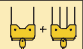
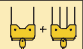
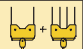
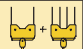
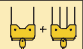
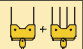
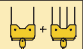
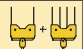
fifth-wheel towing unit with A-type ballast block installed  
(weight approximately 42,800 lbs / 19,420 kg)

## Radius & Capacities

### 2-Part Line

Hook reach	Maximum capacity		ft m	11	33	53	56	59	63	66	69	72	75	79	82	85	89	92	95	98
				3.3	10	16	17	18	19	20	21	22	23	24	25	26	27	28	29	30
98 ft 30m	5,510 lbs — 53.5 ft 2 500 kg — 16.3m		lbs kg	5,510 2 500	5,510 2 500	5,510 2 500	5,203 2 360	4,806 2 180	4,475 2 030	4,189 1 900	3,924 1 780	3,682 1 670	3,461 1 570	3,285 1 490	3,109 1 410	2,954 1 340	2,800 1 270	2,668 1 210	2,535 1 150	2,425 1 100
92 ft 28m	5,510 lbs — 56.1 ft 2 500 kg — 17.1m		lbs kg	5,510 2 500	5,510 2 500	5,510 2 500	5,510 2 500	5,159 2 340	4,806 2 180	4,475 2 030	4,189 1 900	3,946 1 790	3,726 1 690	3,527 1 600	3,329 1 510	3,175 1 440	3,020 1 370	2,870 1 300		
85 ft 26m	5,510 lbs — 58.1 ft 2 500 kg — 17.7m		lbs kg	5,510 2 500	5,510 2 500	5,510 2 500	5,510 2 500	5,379 2 440	5,004 2 270	4,674 2 120	4,387 1 990	4,123 1 870	3,880 1 760	3,682 1 670	3,483 1 580	3,305 1 500				
79 ft 24m	5,510 lbs — 61.4 ft 2 500 kg — 18.7m		lbs kg	5,510 2 500	5,510 2 500	5,510 2 500	5,510 2 500	5,510 2 500	5,379 2 440	5,027 2 280	4,718 2 140	4,453 2 020	4,189 1 900	3,970 1 800						
72 ft 22m	5,510 lbs — 63 ft 2 500 kg — 19.2m		lbs kg	5,510 2 500	5,510 2 500	5,510 2 500	5,510 2 500	5,510 2 500	5,510 2 500	5,247 2 380	4,916 2 230	4,630 2 100								
66 ft 20m	5,510 lbs — 66 ft 2 500 kg — 20.0m		lbs kg	5,510 2 500	5,510 2 500	5,510 2 500	5,510 2 500	5,510 2 500	5,510 2 500	5,510 2 500										
59 ft 18m	5,510 lbs — 59 ft 2 500 kg — 18m		lbs kg	5,510 2 500	5,510 2 500	5,510 2 500	5,510 2 500	5,510 2 500												

### 2/4-Part Line

Hook reach	Maximum capacity		ft m	11	33	53	56	59	63	66	69	72	75	79	82	85	89	92	95	98
				3.3	10	16	17	18	19	20	21	22	23	24	25	26	27	28	29	30
98 ft 30m	8,820 lbs — 36.7 ft 4 000 kg — 11.2m		lbs kg	8,820 4 000	8,820 4 000	5,360 2 430	4,938 2 240	4,564 2 070	4,233 1 920	3,924 1 780	3,682 1 670	3,439 1 560	3,241 1 470	3,042 1 380	2,866 1 300	2,712 1 230	2,579 1 170	2,447 1 110	2,315 1 050	2,205 1 000
92 ft 28m	8,820 lbs — 38.7 ft 4 000 kg — 11.8m		lbs kg	8,820 4 000	8,820 4 000	5,750 2 610	5,291 2 400	4,894 2 220	4,542 2 060	4,233 1 920	3,968 1 800	3,704 1 680	3,483 1 580	3,285 1 490	3,109 1 410	2,932 1 330	2,778 1 260	2,645 1 200		
85 ft 26m	8,820 lbs — 39.7 ft 4 000 kg — 12.1m		lbs kg	8,820 4 000	8,820 4 000	6,000 2 720	5,534 2 510	5,115 2 320	4,762 2 160	4,431 2 010	4,145 1 880	3,880 1 760	3,660 1 660	3,461 1 570	3,263 1 480	3,085 1 400				
79 ft 24m	8,820 lbs — 42 ft 4 000 kg — 12.8m		lbs kg	8,820 4 000	8,820 4 000	6,480 2 940	5,975 2 710	5,534 2 510	5,137 2 330	4,806 2 180	4,497 2 040	4,211 1 910	3,968 1 800	3,745 1 700						
72 ft 22m	8,820 lbs — 43.3 ft 4 000 kg — 13.2m		lbs kg	8,820 4 000	8,820 4 000	6,770 3 070	6,239 2 830	5,776 2 620	5,379 2 440	5,004 2 270	4,696 2 130	4,410 2 000								
66 ft 20m	8,820 lbs — 44.9 ft 4 000 kg — 13.7m		lbs kg	8,820 4 000	8,820 4 000	7,120 3 230	6,570 2 980	6,085 2 760	5,666 2 570	5,290 2 400										
59 ft 18m	8,820 lbs — 46.6 ft 4 000 kg — 14.2m		lbs kg	8,820 4 000	8,820 4 000	7,470 3 390	6,900 3 130	6,395 2 900												

NOTE! 2/4-part operation available only with jib at 0°.