

# benazzato

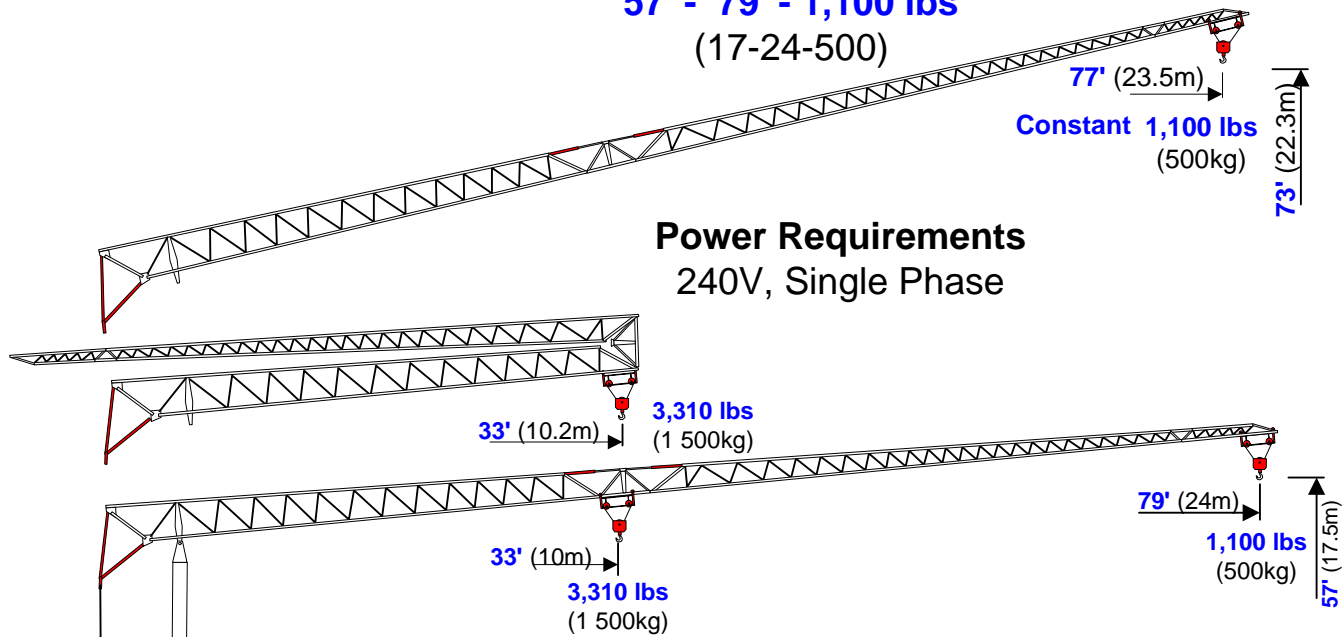
## Self-Erecting Crane

### 1179-SC (102)



**Self-Contained**  
**57' - 79' - 1,100 lbs**  
 (17-24-500)

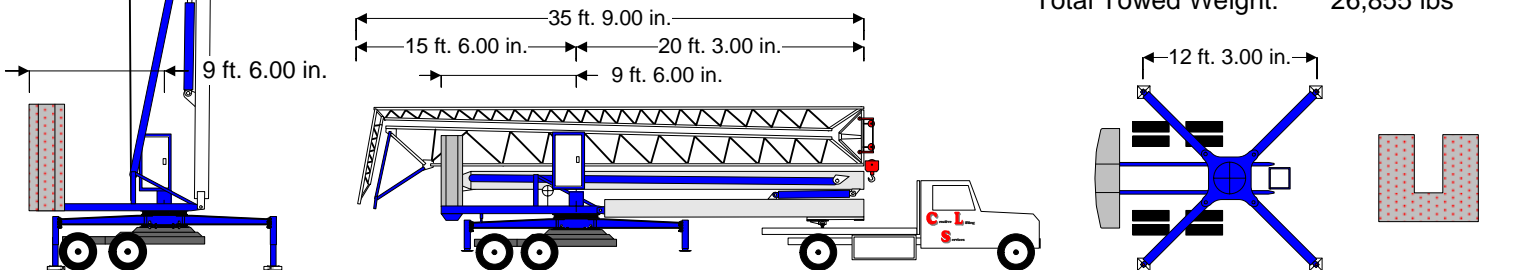
**Power Requirements**  
 240V, Single Phase



**Self-Contained**  
 Travels with Full Counterweights

**Maximum Reactions**  
 19,845 lbs

Axles & Hitch: 3,700 lbs  
 Ballast: 11,025 lbs  
 Crane Weight: 12,130 lbs  
 Total Erected Weight: 26,855 lbs  
 Total Towed Weight: 26,855 lbs



Electric, Hydraulic Or Air Brakes. Goose Neck, 5th Wheel Or Pintle Hitch

Hook Radius	ft.	33	36	39	43	46	49	52	59	66	72	79
	meters	10	11	11.9	13.0	14.0	15.0	16.0	18.0	20.0	22.0	24.0
Max Capst	lbs.	3,308	2,922	2,646	2,359	2,150	1,973	1,819	1,577	1,389	1,235	1,103
	tonnes	1.50	1.33	1.20	1.07	0.98	0.90	0.83	0.72	0.63	0.56	0.50