

Tolerancing NEN 2731 (E)
Tolerances acc. ISO 2768-mK-(E) / ISO 13920-AE

GPS - geometrical tolerancing acc. ISO 1101
Limits and fits acc. ISO 286

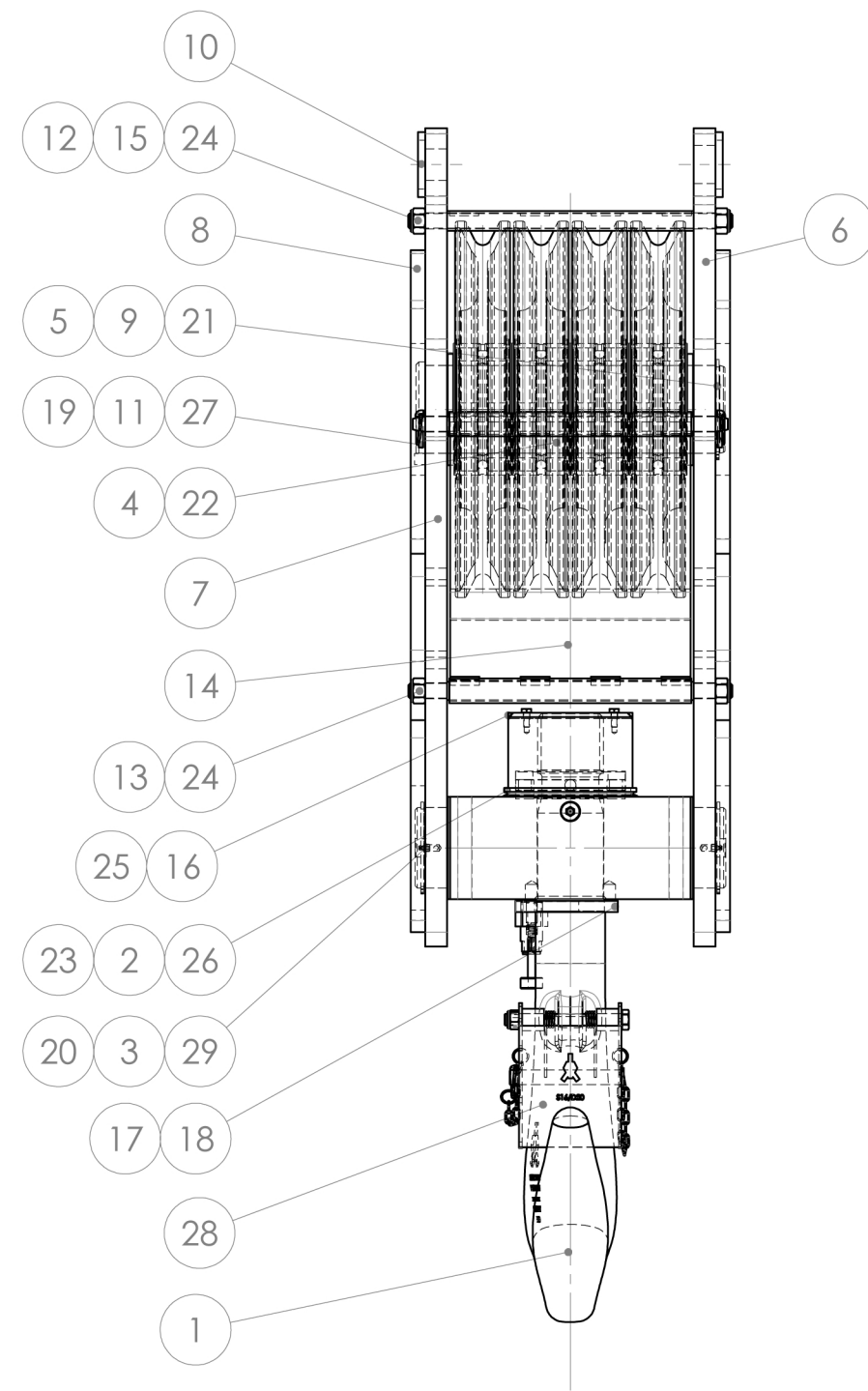
Surface texture acc. ISO 1302

Title:
CRANEBLOCK WLL 70 Mtons [77 UStons]

Ropeblock code:	FRB 450.22.4.70.E	SWL/WLL:	70 Mtons [77 UStons]
Customer ID:	-	Dynamic factor:	-
Wire rope:	Ø 22 mm [7/8"]	Load group:	1Bm DIN 15400
Hook size:	16V acc. DIN 15401	Max. subsea depth:	-
Target weight:	750 kg [1650lbs]	Personnel lift SWL/WLL:	-
Design Acc.:	RB Standard, S.F. 4:1		

Drawn:	PO	Date:	05-11-12	Projection:
Checked:	PO	Material:	-	
Units:	mm	Theoretical weight:	748.3 kg	Sheet: 1 / 2
Format:	A3	Treatment:	-	Revision: 00
Scale:	1:8	Drawing Number:	E120225	
Rev. Description:	Rev. Date:	Rev. by:		

POS.	QTY.	Drawing Number	Title	Material
1	1	01.16.V.E.256	SINGLE HOOK 16V ACC. DIN 15401	34CrNiMo6
2	1	02.16.V.81220	HOOKNUT 16V - 81220	34CrNiMo6
3	1	E120225.03	TRAVERSE FRB 450.22.4.70	S355J2N
4	4	04G.450.5024.12	SHEAVE 450/120 R12 - MACHINING	GGG 50
5	1	05K.120.399	SHAFT \varnothing 120 FRB 450.26.4.80	34CrNiMo6
6	1	E120225.06A	CHEEKPLATE FRB 450.22.4.70	S355J2N
7	1	E120225.06B	CHEEKPLATE FRB 450.22.4.70	S355J2N
8	2	E120225.07R	CHEEKWEIGHT FRB 450.22.4.70	S235J0
9	2	09.152.15.8	POS.RING FRB 450.26.4.80	S235J0
10	2	10.89.11.10	SPACERRING FRB 450.26.4.80	S235J0
11	2	12A.20.431	STUD KB 400.18.5.80	AISI 304
12	2	13.20.444	BAR KB 400.18.5.80	C22
13	2	14.25.337.443	HINGEBAR KB 400.18.5.80	S355J0
14	2	18.450.337	REEVEGUIDE KB 450.19.3.50	S235J0
15	1	19.280.337	TOPPLATE FRB 450.26.4.80	S235J0
16	1	21.170.25.8	RETAINER 170x25x8	S235J0
17	1	33.15.20.30	LOCKING GEAR \varnothing 15	S235J0
18	1	34.16.15.75	LOCKING PLATE HOOK 16	S355J2N
19	1	41.15.15.40	NOTCH 15x15x40mm	S235J0
20	2	50.110.4	CIRCLIP 110 A - DIN 471	Steel
21	1	50.120.4	CIRCLIP 120 A - DIN 471	Steel
22	4	54.5024PP	Bearing SL04 5024-PP	Steel
23	1	54.81220	Bearing 81220	Steel
24	8	55.EV.20	Nyloc Nut M20 - DIN 985	8.8
25	2	56.EV.08.20	BOLT M8x20 - DIN 933	8.8
26	1	61.170A	Dirtseal 170A	NBR
27	4	63.6	Safety pin \varnothing 6	Galvanized Steel
28	1	64.16.E.B	Heavy duty safety latch kit for S16/D20 - DIN 15401/2	Acc. Spec.
29	3	66.10.01	Lubrication nipple M10x1 - DIN 71412	Steel



Tolerancing NEN 2731(E) Tolerances acc. ISO 2768-mK-(E) / ISO 13920-AE		GPS - geometrical tolerancing acc. ISO 1101 Limits and fits acc. ISO 286		Surface texture acc. ISO 1302	
Title: CRANEBLOCK WLL 70 Mtons [77 UStons]					
Drawn: PO		Date: 05-11-12		Projection:	
Checked: PO		Material: -			
Units: mm		Weight: 748.3 kg			
Format: A3		Treatment: -		Sheet: 2 / 2	
Scale: 1:10		Drawing Number:		Revision:	
Rev. Description:		Rev. Date:		Rev. by:	
				E120225	
				00	