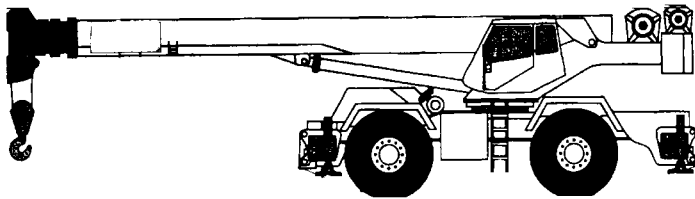


TEREX RT 175 SERIES

**75 Ton (68 tonne) capacity
rough terrain cranes
specifications**



STANDARD BOOM EQUIPMENT

BOOM

40-126 ft. (12.2-38.4 m), four section full power, synchronized boom. High-strength four plate construction welded inside & out. Anti-friction slide pads. Two double acting boom hoist cylinders. Maximum tip height is 134 ft.

BOOM HEAD

Welded to fourth section of boom. Five non metallic main sheaves and two non metallic idler sheaves mounted on heavy duty anti-friction bearings. Quick reeving boom head.

OPTIONAL BOOM EQUIPMENT

JIBS

38 ft. (11.6 m) self storing swing-on one-piece lattice type jib. Single sheave mounted on anti-friction bearing. Jib is offsettable at 0', 17', or 30'. Maximum tip height is 164 ft. (50 m) with 126 ft. (38.4 m) boom.

38-60 ft. (11.6 –18.3 m) self storing swing-on lattice type jib. Single sheave mounted on anti-friction bearing. Jib is extendible to 60 ft. (18.3 m) by means of a 22 ft. (6.70 m) manual pull-out tip section, Jib is offsettable at 0', 17' or 30'. Maximum tip height is 193 ft. (58.8 m) with 126 ft. (35 m) boom.

AUXILIARY BOOM HEAD

Removable auxiliary boom head has single sheave mounted on anti-friction bearing. Removable pin-type rope guard for quick reeving. Installs on main boom Peak only. Removal is not required for jib use.

HOOK BLOCK

75 Ton Five steel sheaves on anti-friction bearings with hook and heavy duty latch. Quick reeving design.

HOOK & BALL

9.2 ton (8.3mt) top swivel ball with hook and hook latch.

www.terexlift.com

STANDARD UPPERSTRUCTURE EQUIPMENT

UPPERSTRUCTURE FRAME

All welded one-piece structure fabricated with high tensile strength alloy steel. 15,200 LB. (6,895kg) bolt on type counterweight is removable.

TURNTABLE CONNECTION

Swing bearing is a single row, ball type, with external teeth. The swing bearing is welded to the carrier.

SWING

A hydraulic motor drives a double planetary reduction gear for precise and smooth 360 degree swing function. Swing speed is 2 rpm.

SWING BRAKE

Heavy duty multiple disc swing brake is actuated from operator's cab by foot pedal. Brake may be locked on or used as a momentary brake.

RATED CAPACITY INDICATOR

Rated Capacity Indicator with visual and audible warning system and automatic function disconnects. Pictographic display includes: boom radius, boom angle, boom length, allowable load, actual load, and percentage of allowable load registered by bar graph. Operator settable alarms provided for swing angle, boom length, boom angle, tip height, and work area exclusion zone. Anti-two block system includes audio/visual warning and automatic function disconnects.

OPERATOR'S CAB

Environmental cab with all steel construction, optimized visibility, tinted safety glass throughout, and rubber floor matting. The cab has a sliding door on the left side, framed sliding window on the right side, hinged tinted all glass skylight

Acoustical foam padding insulates against sound and weather. Cloth covered adjustable operator's seat is equipped shock absorbing suspension and includes arm rests and seat belts.

CONTROLS

All joystick control levers and pedals are positioned for efficient operation. Hand operated controls include swing, foot pedal, boom hoist, winch(s), shift, 360 degree house lock. Switches include ignition, engine stop, steering mode, parking brake, two speed winch, and outrigger controls. Foot control pedals include swing brake, boom telescope, service brakes and accelerator.

INSTRUMENTATION AND ACCESSORIES

In-cab gauges include air pressure, bubble level, engine oil pressure, fuel, engine coolant temperature, voltmeter, transmission temperature, transmission charge pump pressure. Indicators include low air, high coolant temperature/low engine oil pressure/high transmission temperature audio/Visual warning, tachometer, low coolant warning, hoist drum rotation indicator, and rated capacity indicator. Accessories include fire extinguisher; light package including headlights, taillight, brake lights, directional signals, four-way hazard flashers, dome & dash lights, and back-up lights with audible back-up alarm; windshield washer/wiper; roof wiper; rear view mirrors, rear steer centering light, and defroster fan.

HYDRAULIC CONTROL VALVES

Valves are mounted on the side of the upperstructure and are Easily accessible. Valves are hydraulically operated.

OPTIONAL EQUIPMENT

Auxiliary Winch-Air Conditioner-Work Lights-Revolving Amber Light-Diesel or Propane Heater

STANDARD CARRIER EQUIPMENT

CARRIER CHASSIS

High strength chassis with four-wheel drive and four-wheel steer (4x4x4). Has box beam type construction with reinforcing cross members, a precision machined turn table mounting plate and integrally welded outrigger boxes. Decking has anti-skid surfaces, including tool storage compartment, and access steps and handles.

AXLES AND SUSPENSION

Rear axle is a planetary drive/steer type with hydraulic lockouts. Osillation is +/- 5.2 in. (132mm). Osillation lock out override control. Front axle is a planetary drive/steer type.

STEERING

Hydrostatic power steering, front and rear axles. Control modes for front only, four wheel cramp and crab steering all controlled by steering wheel.

Turning radius to center of outside tire.
29.5X25-28PR
20ft. 9in. (6.3m)

TRANSMISSION

Fully sequential powershift with torque convertor. Six speeds Forward and three reverse.

STANDARD CARRIER EQUIPMENT (continued)

MULTI-POSITION OUT & DOWN OUTRIGGERS

Fully independent hydraulic outriggers may be extended to 23 ft. 7 in. (7.2 m), 16 ft. 4 in. (4.98m), and 9 ft. 7 in. (2.9m) Front to rear spread is 23 ft. 8 in. (7.2m) Easily removable Floats 24in. (610mm) square stow on the carrier frame. Complete controls and sight leveling bubble are located in the operator's cab.

WHEELS & TIRES

Disc type wheels tubeless with rock tread.

TIRES

29.5X25-28PR

SERVICE BRAKES

Dual circuit, air over hydraulic drum brakes at each wheel.

PARKING BRAKE

Disc brake on the transmission output shaft

OPTIONAL EQUIPMENT

Cold Weather Starting Aid - Immersion Heater • Spare tire • Pintle Hook • Tire Inflation Kit • Front Mounted Winch – 15,000lbs. 6.75mt line pull.

HYDRAULIC SYSTEM

HYDRAULIC PUMPS

System uses two tandem gear-type pumps with a Total flow of 139 gpm (525 lpm). Manual Disconnect is standard.

Main and Auxiliary Winch Pump

81 gpm (306 lpm) @ 2,000 psi (138 kg/cm²)

Boom Hoist, Telescope Pump

53 gpm (200 lpm) @ 2,000 psi (138 kg/cm²)

Power Steering, and Swing Pump

28 gpm (106 lpm) @ 2,000 psi (138 kg/c M²)

FILTRATION

Full flow oil filtration system is by two 10-micron return line filters externally mounted to the reservoir and one 20 -micron pressure line filter.

HYDRAULIC RESERVOIR

All steel, welded construction with diffuser. Easy access to filters and is equipped with an air breather and dip stick. Capacity is 177 gallons (670 liters). Oil cooler is standard.

MAIN WINCH SPECIFICATION

Hydraulic winch with bent axis piston motor and planetary reductiongearing provides 2-speed operation with equal speeds for power up and down and infinitely variable speed control. Winch is equipped with an multi-disc brake, grooved drum, tapered flanges, standard cable roller on drum, and drum turn indicator.

PERFORMANCE

Bradon 185

Max. line speed

-Fifth layer 456 fpm (181 mpm)

Max. line pull

-First layer 20,400 lbs. (9250kg) low speed

Permissible line pull 15,000 lbs. (6802kg) per part of line

Strength limit 16,800 lbs. (7620kg) with 3.5:1 safety factor

OPTIONAL AUX. WINCH

Bradon PD17

PERFORMANCE

Bradon PD17

Max. line speed

-Fifth layer 504 fpm (154 mpm)

Max. line pull

-First layer 17,400 lbs. (7892kg) low speed

Permissible line pull 11,000 lbs. (4990kg) per part of line

Strength limit 16,800 lbs. (7620kg) with 3.5:1 safety factor

DRUM CAPACITY

Max. Storage: 886 ft (237 m) ¾ in. wire rope

CABLE

550 ft. (167m) of ¾ in. (19mm) diameter, 6x37 EIPS with 7x7 IWRC.

OPTIONAL CABLE

Rotation resistant wire rope 3/4x550' 8x19 EIPS WITH 7X7 IWRC.

DRUM CAPACITY

Max. Storage: 554 ft (168 m) ¾ in. wire rope

CABLE

460 ft. (140m) of ¾ in. (19mm) diameter, 6x37 EIPS with 7x7 IRWC.

OPTIONAL CABLE

Rotation resistant wire rope 3/4x550' 8X19 EIPS with 7x7 IWRC.

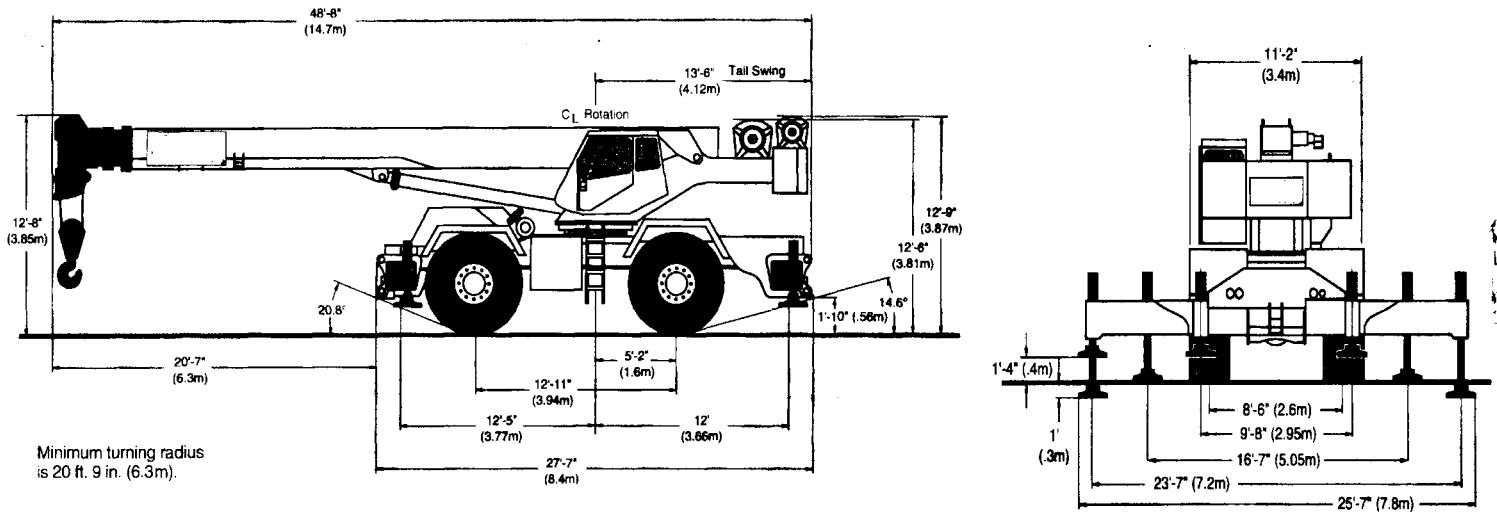
ENGINE SPECIFICATIONS

Make and Model

Cummins 6CT8.3L

| | |
|-------------------|-------------------------------------|
| Type | 6 cylinder |
| Bore and Stroke | 4.49 in. (114mm) x 5.32 in. (135mm) |
| Displacement | 504.5 in.3 (8.27 litres) |
| Gross Horsepower | 215 @ 2500 rpm |
| Gross Torque | 558 ft. lbs. (756 Nm) |
| Aspiration | Turbo charged, air cooled |
| Air Filter | dry type |
| Electrical System | 24 volt |
| Alternator | 70 amp |
| Battery | 2 8D batteries |
| Fuel Capacity | 80 gallon (303 liter) |

GENERAL DIMENSIONS



| WEIGHTS & AXLE LOADS | GROSS | UPPER FACING FRONT | | GROSS | UPPER FACING FRONT | |
|--------------------------------------------|---------|--------------------|--------|---------|--------------------|--------|
| | WEIGHT | | | WEIGHT | | |
| | LBS. | FRONT | REAR | KG. | FRONT | REAR |
| Basic Machine RT175 | 98,200 | 50,120 | 48,080 | 44,535 | 22,725 | 21,810 |
| Add Options: | | | | | | |
| 38'(11.6 m) Swing-on jib (Stowed) | + 1,735 | +2,294 | -559 | + 787 | + 1,041 | -254 |
| 38'-60'(11.6-18.3 m) Swing-on Jib (Stowed) | + 2,661 | +3,795 | -1,134 | + 1,207 | + 1,721 | -514 |
| Auxiliary Boom Head | + 154 | + 460 | -306 | + 70 | + 209 | -139 |
| Auxiliary Winch Controls and Plumbing Only | + 75 | + 0 | + 75 | + 34 | + 0 | + 34 |
| Auxiliary Winch Wire Rope. | + 547 | - 306 | + 853 | + 248 | - 139 | -387 |
| 75T 5-Sheave Hook Block (travel) | + 1,220 | +3,700 | -2,480 | + 555 | + 1,680 | -1,125 |
| 9.2T Hook and Ball (boom) | + 467 | + 764 | -296 | + 212 | + 346 | -134 |
| Pintle Hook: Front | + 45 | + 64 | 19 | + 20 | + 29 | 9 |

NOTE: Weights are for factory supplied equipment and are subject to 2% variation due to manufacturing tolerances.

WE RESERVE THE RIGHT TO AMEND THESE SPECIFICATIONS AT ANY TIME WITHOUT NOTICE, THE ONLY WARRANTY APPLICABLE IS OUR STANDARD WRITTEN WARRANTY APPLICABLE TO THE PARTICULAR PRODUCT AND SALE. WE MAKE NO OTHER WARRANTY, EXPRESSED OR IMPLIED.

Terex Cranes, Inc., PO Box 260002, Conway, SC 29528, Phone: (843)349-6900 Fax: (843)349-7090
 TX175-Rev00 E-mail: inquire@terexlifting.com - www.terexlift.com